

Home
PBXware
SERVERware
TELCOware
SIPmon
SIPProt
Desktop & Mobile
BRM
UADs
Appliances
EOL

From Bicom Systems Wiki

Contents

- **1 How to use Aastra 53i with PBXware**
- **2 Registering Aastra 53i**
 - **2.1 Requirements**
 - **2.2 Manual Configuration**
 - **2.3 Auto Provisioning**
- **3 Paging**
- **4 Glossary**

How to use Aastra 53i with PBXware

This "How to" is written as general guide on how to use Aastra 53i with PBXware using SIP Version 2.2 Aastra 53i firmware. It covers the most common tasks that are required to have your Aastra 53i working efficiently.



Registering Aastra 53i

Requirements

1. **Aastra 53i** firmware.
 - Make sure that the device is loaded with **SIP Version 2.2** firmware.
2. DHCP server.
 - Fully configured and operational DHCP server.

Manual Configuration

UAD Settings

STEP ONE: PBXware IP address.

1. Find out the IP address of PBXware server.

STEP TWO: Login into PBXware.

1. Open a new browser window and enter the IP address followed by `"/admin/index.php"` in order to access the PBXware administration interface login screen.

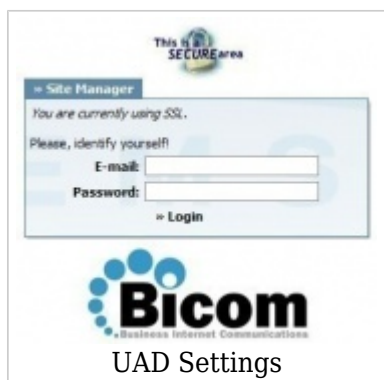
Example: `http://192.168.1.2/admin/index.php`



an example with IP address following by `"/admin/index.php"`

2. Hit "Enter" on your keyboard.

3. Login into PBXware with your e-mail address and password.

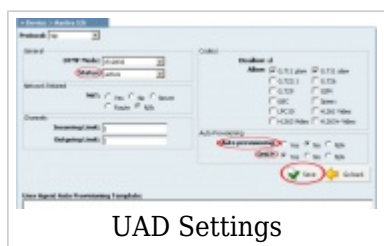


STEP THREE: UAD status.

1. Make sure the UAD is enabled. To check the UAD status, navigate to "Settings:UAD", and click on the "edit" icon corresponding to "Aastra 53i".



2. Make sure "Status" is set to "active", "Auto provisioning" is set to "No", and "DHCP" is set to "Yes".



3. Click on "Save" to save changes.

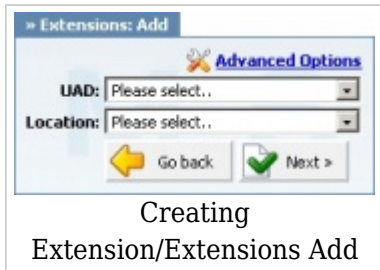
Creating Extension

STEP ONE: Add Extension.

1. Navigate to "Extensions". Click on "Add Extension".



2. The standard options window will be shown below.



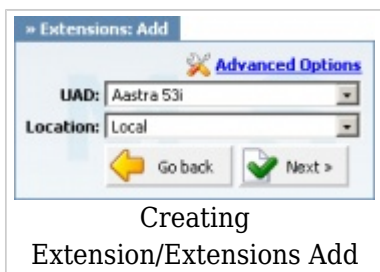
3. Select Aastra 53i from "UAD" select box.

4. Select Location: "Local" or "Remote".

Note:

- "Local" is for all extensions registered on LAN.

- "Remote" is for all extensions registered from remote networks, WAN, Internet etc.



5. Click on "Next".

STEP TWO: Extension values.

1. Enter values into required field text boxes.

REQUIRED FIELDS:

Name:

Enter a name for the extension being created. **Example:** John Smith.

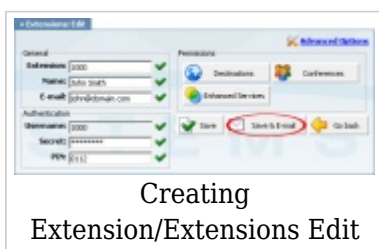
E-mail:

Enter the e-mail address associated with this extension. This e-mail address will receive all system notification messages. **Example:** john@domain.com.



an example with details filled in

2. Click on "Save".



an example with details filled in

3. Click on "Save & E-mail". Account details will be sent to the e-mail address associated with this extension.

OPTIONAL FIELDS:

Extension:

An auto-generated extension number based on the next available sequential number. An extension value can be changed. **Example:** 1000.

Username:

The username is auto generated/populated and cannot be changed since it allows the system to use this value for other important operations.

Secret:

A secret value associated with the UAD is auto-generated in order to allow the UAD to successfully register with the system. The secret value can be changed.

PIN:

An auto-generated PIN will allow access to voicemail and online self care.

Registering Phone

2. Enter following details into the respective fields.

REQUIRED FIELDS:

Phone Number

PBXware extension number. **Example:** 1000

Authentication Name

Usually the same number as "Phone Number".

Password

The Secret of the extension as received in the e-mail associated with this extension. **Example:** 3dX3r5

Proxy Server

IP address of PBXware server. **Example:** 192.168.1.2

Proxy Port

5060

Registrar Server

IP address of PBXware server. Example: 192.168.1.2

Registrar Port

5060

Configuration Line 1

Basic SIP Authentication Settings	
Phone Number	1000
Store Name	
Caller ID	
Authentication Name	1000
Password	3dX3r5
BLA Number	
Line Profile	Generic
Basic SIP Network Settings	
Proxy Server	192.168.1.2
Proxy Port	5060
Outbound Proxy Server	0.0.0.0
Outbound Proxy Port	0
Registrar Server	192.168.1.2
Registrar Port	5060
Registration Period	0
SIP Settings	
DTMF Method	RTT
Save Settings	

Registering Phone

an example with details filled in

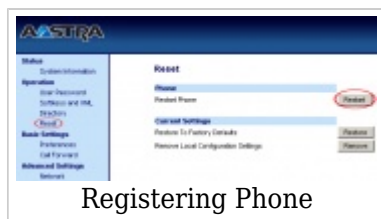
OPTIONAL FIELDS:

Screen Name

Example: John Smith

Other fields Other "options" or "fields" should be left blank or as is by default, they do not have importance for registering Aastra 53i to PBXware.

3. Click on "Save Settings".
4. Click on "Reset" link.



5. Click on the "Restart" button to restart your Aastra 53i so the changes take effect.

- Conclusion: If everything is done as above described you should have successfully registered Aastra 53i to PBXware. Dial ***123** to verify registration.

- For further information, please contact the manufacturer or check their web site www.aastra.com.

Auto Provisioning

UAD Settings

STEP ONE: PBXware IP address.

1. Find out the IP address of the PBXware server.

STEP TWO: Login to PBXware.

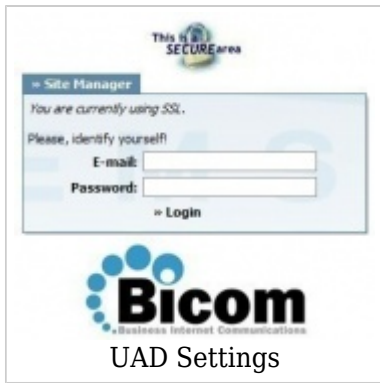
1. Open a new browser window and enter the IP address followed by `"/admin/index.php"` in order to access the PBXware administration interface login screen.

Example: <http://192.168.1.2/admin/index.php>



an example with IP address following by `"/admin/index.php"`

2. Hit "Enter" on your keyboard.
3. Login to PBXware with your e-mail address and password.

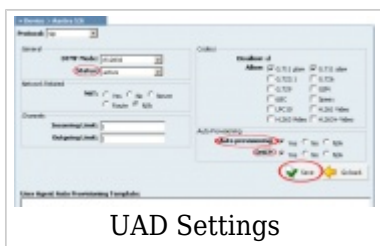


STEP THREE: UAD status.

1. Make sure the UAD is enabled. To check the UAD status, navigate to "Settings:UAD", and click on the "edit" icon corresponding to "Aastra 53i".



2. Make sure "Status" is set to "active", "Auto provisioning" is set to "Yes", and "DHCP" is set to "Yes".



3. Click on "Save" to save changes.

Creating Extension

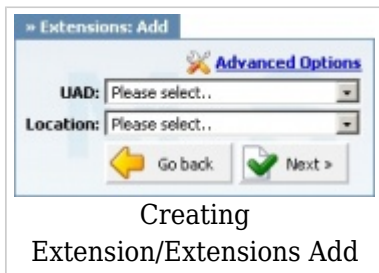
STEP ONE: Add Extension.

1. Navigate to "Extensions". Click on "Add Extension".



Creating Extension

2. The standard options window will be shown below.



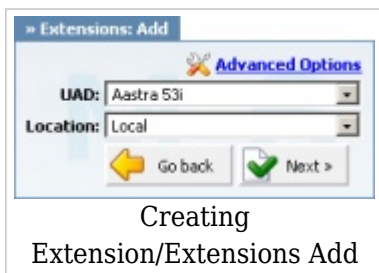
3. Select Aastra 53i from "UAD" select box.

4. Select Location: "Local" or "Remote".

Note:

- "Local" is for all extensions registered on LAN.

- "Remote" is for all extensions registered from remote networks, WAN, Internet etc.



5. Click on "Next".

STEP TWO: Extension values.

1. Enter values into the required field text boxes.

REQUIRED FIELDS:

Name:

Enter a name for the extension being created. **Example:** John Smith.

E-mail:

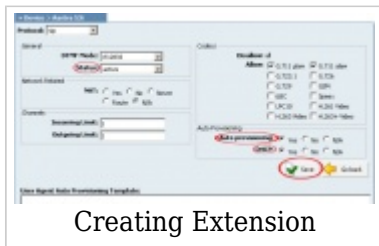
Enter the e-mail address associated with this extension. This e-mail address will receive all system notification messages. **Example:** john@domain.com.

Auto provisioning:

Set to "Yes".

MAC Address:

Aastra 53i MAC address. **Example:** 001646f5f797



an example with details filled in

2. Click on "Save".



an example with details filled in

3. Click on "Save & E-mail". Account details will be sent to the e-mail address associated with this extension.

OPTIONAL FIELDS:

Extension:

An auto-generated extension number based on the next available sequential number. An extension value can be changed. Example: 1000.

Username:

The username is auto generated/populated and cannot be changed since it allows the system to use this value for other important operations.

Secret:

A secret value associated with the UAD is auto-generated in order to allow the UAD to successfully register with the system. The secret value can be changed.

PIN:

An auto-generated PIN will allow access to voicemail and online self care.

Registering Phone

STEP ONE: Electricity and Ethernet.

- Make sure to properly connect your Aastra 53i to the electricity network using a **power adapter** or **passive power over ethernet injector**.

- Connect the ethernet port to a hub, router or switch to access LAN.

Please Note: For information and instruction on how to connect your Aastra 53i to the electricity network and ethernet, check manufacturer documentation on their web site www.aastra.com.

After successfully connecting your Aastra 53i to the electricity and data networks, it is time to register it to PBXware.

STEP TWO: Aastra 53i IP address.

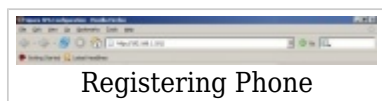
Find out the IP address of the Aastra 53i connected to network.

1. Press the button with the "i" sign.
2. Select "Option list" from the menu.
3. Select "Phone status".
4. Select "IP & MAC addresses" option.
5. The IP address of your PBXware displays in the "IP Address" field.

STEP THREE: Aastra 53i Web Interface.

1. Open a new browser window and enter the IP address in order to access Aastra 53i administration interface.

Example: <http://192.168.1.101/>

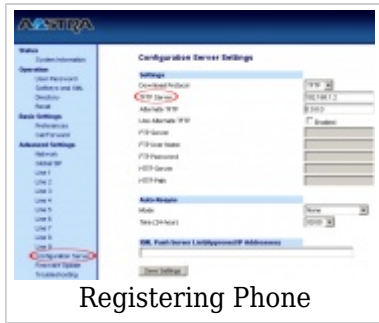


an example with IP address

2. Hit "Enter" on your keyboard.
3. Login to the Aastra 53i Web Interface. You'll be prompted to enter a username and password. The factory default username is lower case "admin" and password is "22222".

STEP FOUR: Configuring TFTP server.

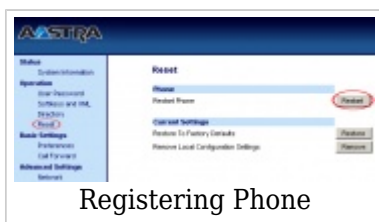
1. Click on "Configuration Server" link.



Registering Phone

an example with details filled in

2. "TFTP Server" must be set with TFTP server value. **Example:** 192.168.1.2
3. Click on "Save Settings".
4. Click on "Reset" link.

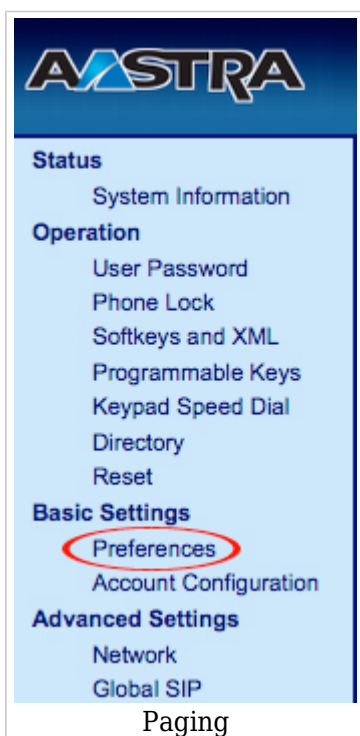


Registering Phone

5. Click on the "Restart" button to restart your Aastra 53i so the changes take effect.

Paging

1. Navigate your Internet browser to the phone's IP address (for example http://192.168.1.1).
2. Select "Preferences" under the "Basic Settings" tab.

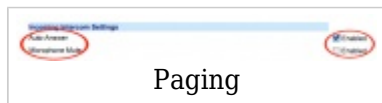


Paging

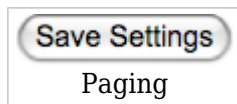
3. Make sure that

Auto-Answer box is checked.

Microphone Mute box is not checked.



4. Navigate to the bottom of the page and click on "Save Settings".



5. Reboot the phone to apply the new settings.

NOTE: At the time, the paging option is set for all lines and works once the handset is picked up. Paging tested with Firmware version 1.3.1.1095.

Glossary

- **DHCP** = Dynamic Host Configuration Protocol (DHCP) is a communications protocol that allows network administrators to manage and automate the assignment of Internet.

- **HUB** = A common connection point for devices in a network.

- **IP Address = Internet Protocol address.**

- **Local** = A local area network (LAN) is a computer network covering a local area, like a home, office, or small group of buildings such as a college.

- **LAN** = Local Area Network.

- **PIN** = Personal Identification Number.

- **Remote** = Network devices that are managed or controlled from a network system other than the system to which they are directly connected.

- **Router** = A device that forwards data packets from one local area network (LAN) or wide area network (WAN) to another.

- **Switch** = Network device that selects a path or circuit for sending a unit of data to its next destination.

- **UAD** = User Agent Device.

- **VoiceMail** = The electronic transmission of voice messages over the Internet. The messages are stored on a computer until the recipient accesses and listens to them.

- **WAN** = Wide Area Network.

- **Web Interface** = A web interface is the system of controls with which the user controls a device.

Retrieved from "http://wiki.bicomsystems.com/UAD_Aastra_53i"

Disclaimers - About Bicom Systems Wiki